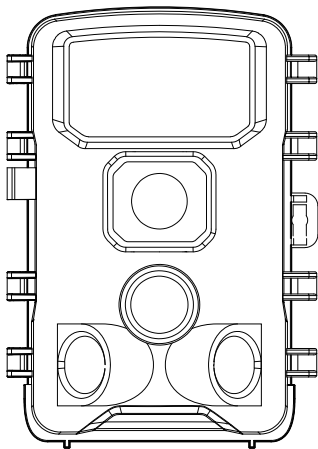


KJK

KJK230 Wi-Fi Trail Camera



User Manual

V24031501

TABLE OF CONTENT

1. IN THE BOX	01
2. IMPORTANT NOTE	01
2.1. Battery Requirements.....	01
2.2. Battery Caution.....	01
2.3. Battery Preservation.....	01
2.4. Memory Card Specification.....	02
2.5. Regarding App Wi-Fi Connection.....	02
2.6. Remove Protective Films.....	02
2.7. On-Screen Information.....	03
3. INTRODUCTION	03-04
3.1. About the Camera.....	03
3.2. Main Features.....	03-04
3.3. Applications.....	04
4. PARTS AND CONTROLS	04-09
5. INSTALLING THE BATTERIES AND MEMORY- CARD	09-11
5.1. Loading Batteries.....	10
5.2. Inserting the Memory Card.....	11-12
6. USING THE CAMERA	13
7. THE OFF, ON, AND SETUP MODES	13-15

7.1. OFF Mode.....	14
7.2. SETUP Mode.....	14
7.3. ON Mode.....	15
Shortcut Keys/Functions.....	15
8. Wi-Fi CONNECTION.....	16-231
8.1. Download TrailCam Go Mobile APP.....	6-17
8.2. Enable Wi-Fi and Bluetooth.....	17
8.3. Add Your Camera.....	18
8.4. Choose Device Type.....	18
8.5. Search Your Camera and Link.....	19-21
8.6. App Navigation.....	22-23
9. ADVANCED SETTINGS.....	23-27
10.MOUNTING AND POSITIONING THE CAMERA.....	28-30
10.1. MOUNTING.....	28
10.2. SENSING ANGLE AND DISTANCE TEST.....	29
10.3. SWITCHING ON THE CAMERA.....	30
11. REVIEW PHOTOS OR VIDEOS.....	31
12. TECHNICAL SPECIFICATIONS.....	32-33
13. IMPORTANT NOTE.....	33-34
14. WARRANTY.....	35
TWO-YEAR LIMITED WARRANTY.....	35
15. FCC COMPLIANCE STATEMENT.....	36-37

1. IN THE BOX

1x Trail Camera, 1x Mounting Strap, 1x Base of Stand Set, 1x USB Cable, 1x Memory Card, 1x **User Manual**

Note: A memory card has been inserted into the card slot.

2. IMPORTANT NOTE

2.1. Battery Requirements

This camera requires a total of eight (8) **1.5V** AA Alkaline or **1.5V** Lithium Rechargeable batteries for power. We highly recommend using Brand 1.5V AA Alkaline batteries to maximize battery life.

2.2. Battery Caution

Please do not mix old and new batteries, and avoid mixing different battery types. **1.2V Rechargeable AA batteries** are **NOT** recommended, as they may produce lower voltage, which can lead to operational issues.

2.3. Battery Preservation

Remember to remove the batteries when the camera is **NOT** in use to prevent unnecessary power drain.

2.4. Memory Card Specification

This camera requires a memory card with a maximum capacity of 128GB, rated at Class 6 or above for optimal performance. We recommend using SanDisk 64GB SDHC/-Class 10 memory cards for a cost-effective and reliable choice.

Before first use, please format your memory card in the camera by using “Memory Card Format” in the menu settings.

2.5.Regarding App Wi-Fi Connection

For optimal performance when connecting your phone to the camera via Wi-Fi, we suggest keeping your phone within a range of 45 feet (approximately 15 meters) from the camera. Interference from various sources can affect the signal quality. If you encounter connectivity issues or a weak signal, please try moving your phone closer to the camera step by step to establish a stable connection.

Note: KJK230 WiFi trail camera can't connect to home Wi-Fi router.

Legal Attribution:

Apple and the Apple Logo are trademarks of Apple Inc., registered in the U.S. and other countries.

Google Play and the Google Play logo are trademarks of Google LLC.

These trademarks are the property of their respective owners and are not associated with our product or company.

2.6.Remove Protective Films

Before using the camera, please ensure that you have removed any protective films on the front of the camera. This step is crucial to achieve the best performance.



2.7. On-Screen Information

The number displayed in the top right corner of the screen indicates either the length of video that can be recorded or the number of photos that can be taken, depending on the camera's current mode.

3. INTRODUCTION

3.1. About the Camera

The KJK230 heralds a new era in trail cameras. Overflowing with advanced features, this camera is meticulously crafted to enhance your outdoor monitoring experience.

With a built-in Wi-Fi and Bluetooth module, the KJK230 ensures effortless connectivity and camera control through our dedicated "TrailCam Go" App. The low-power Bluetooth module expedites device discovery, while Wi-Fi enables live previews, seamless image transmission, and hassle-free settings adjustments.

3.2. Main Features

- Bluetooth for device discovery
- Wi-Fi for preview, playback, and settings
- Captures high-quality media: 84MP still photos, 8K 30fps H.264 video clips with audio
- Exceptional night vision with a 90ft flash range
- Wide 130° view angle
- User-friendly program with intuitive operation keys and a

built-in 2.0 inch color screen, simplifying programming and media review

- Two modes available: Motion detection and Timelapse
- Swift performance with a 0.05s trigger time, 0.05s recovery time, long 100ft trigger distance, and a 130° detection angle
- Each capture includes an info strip displaying Date, Time, Temperature, and Moon phase
- Additional features: Work Time tracking, Loop Recording, Time Lapse, Password Protection
- Designed for all climates with IP67 rating; operational in temperatures ranging from -22°F to 158°F
- Supports SD/SDHC/SDXC memory cards, with a maximum capacity of 128GB

3.3.Applications

The camera is versatile and can be utilized in various ways:

- **Hunting:** Capture animals' tracks and behaviors in their natural habitat.
- **Wildlife Observation and Research:** Record pictures and videos of wild animals in their natural environment.
- **Action Camera:** Perfect for activities like riding, driving, camping, or exploring, allowing you to capture your adventures.
- **Motion-Triggered Security Camera:** Ideal for home, farm, office, and community surveillance, ensuring security and peace of mind.
- **Indoor and Outdoor Surveillance:** Suitable for both



indoor and outdoor applications where evidence of intrusion or monitoring is needed.

4. PARTS AND CONTROLS

EN The camera is equipped with 45pcs built-in high efficiency infrared LEDs, LED Indicators, Lens, 3pcs PIR Sensors, Lock Holes in front view (*Figure 1*).

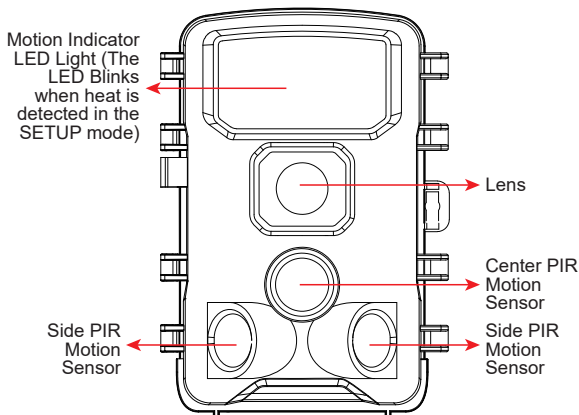


Figure 1: Front View

The camera provides the following connections for external devices: USB port and memory card slot etc. (Figure 2).

EN

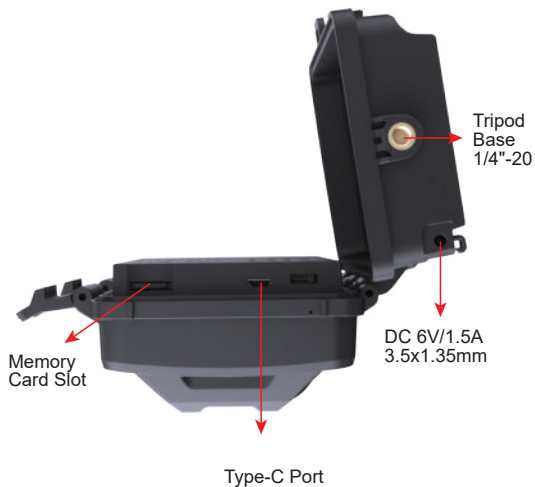


Figure 2: Bottom View

The camera has 2 strap holes on the back. The strap can be put through the strap holes and fastened securely around the tree trunk by pulling the end of the strap firmly (*Figure 3*).

EN



Figure 3: Back View

The camera has a 2.0-inch built-in LCD screen, which can be used for reviewing pictures or videos and menu displaying, and unique keypad design for easy program and operation, 8 AA batteries slot.

EN



Figure 4: Inside View



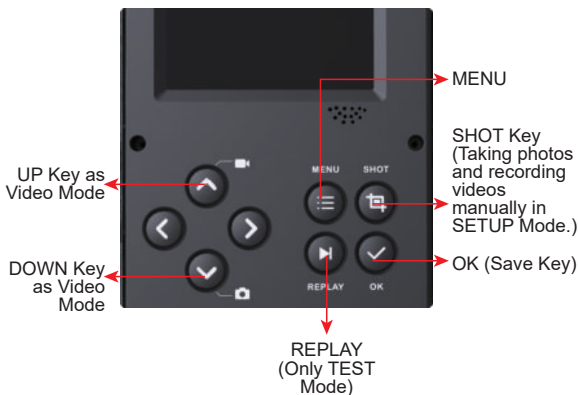


Figure 5: Operation Keys and Shortcut

5. INSTALLING THE BATTERIES AND MEMORY CARD

Before you begin learning how to use your camera, you will first need to install a set of batteries and insert an memory card.

Although that may only take you a minute, there are some important notes about both batteries and memory cards you should be aware of, so please take the time to **read the following directions and cautions:**

5.1. Loading Batteries

After opening the battery compartment cover, you'll notice that the camera features eight battery slots (*Figure 6*). To ensure the camera operates correctly, it's essential to insert all eight batteries with the correct polarity, ensuring the negative or "flat" end aligns with the long spring in each battery slot.

Regarding rechargeable battery, for optimal performance. Use 1.5V rechargeable lithium-ion batteries. They store more power than regular alkaline and perform better, especially in cold outdoor conditions. Avoid low-quality NiCd or Nickel Metal Hydride rechargeables, as they store less power and underperform compared to standard alkalines.

During **SETUP** mode, when the battery power level becomes low, you will see the message "**Low Battery**" displayed on the screen. At this point, it's important to replace the batteries.

Please keep in mind that when the battery charge drops to **1/3**, the Night Vision function will automatically deactivate. You can monitor the remaining power in the bottom right corner of the screen. It's worth noting that the camera consumes more power during nighttime operation due to its built-in IR LEDs. To maximize battery life during night use, we recommend using 1.5V AA alkaline batteries, particularly 8 brand batteries, as they offer a battery life two to three times longer than regular batteries.



Figure 6: Loading the Batteries

5.2. Inserting the Memory Card

Insert the memory card (**with the camera's power switch in the OFF position**) before beginning to operate the camera. Don't insert or remove the memory card when the power switch is in the **ON** or **SETUP** mode. The camera uses a regular memory card to save photos (in .jpg format) and/or videos (in .MP4 format). Memory cards up to a maximum 128GB capacity is supported (*Figure 7*).

The following describes how to insert and remove the memory card:

- Insert the memory card into the card slot with its label side upwards. A "click" sound indicates that the card is installed successfully. If the wrong side of the card is facing

up, you will not be able to insert it without force, there is only one correct way to insert cards. If the memory card is not installed correctly, the device will not display an memory card icon on the screen in **SETUP** mode.

Formatting Memory card by using the camera's "**Memory Card Format**" parameter in the menu settings before using it for the first time is recommended, especially when a card has been used in other devices.

- To take out the memory card, just gently push in the card (do not try to pull it out without pushing in first). The card is released from the slot and ready to be removed when you hear the click. Be sure the camera's power is switched **OFF** before inserting or removing memory cards or batteries.



Figure 7: Inserting the Memory Card

6. USING THE CAMERA

Once you've prepared your camera with the correct installation of batteries and an memory card, you can simply take it outdoors and secure it to a tree (or based on your specific application scenario). Switch it **ON** and leave it to capture potential great photos that match your expectations. However, we strongly recommend that you initially invest some time indoors with this manual (Alternatively, you can visit our website at "www.kjcam.com", where we regularly update instructional videos and FAQs videos to assist you in using our products) along with your camera. This will help you familiarize yourself with the functions of those control keys.

At the very least, you may want to set the date and time so that the camera can imprint them (or not, as it's your choice) on your photos as they are taken. You can also learn how to configure the camera to shoot video clips instead of still photos if that's your preference. Additionally, reading some tips on how to mount it securely on a tree can be beneficial.

7. THE OFF, ON, AND SETUP MODES

The camera has three basic operational modes:

- **OFF** mode: Power switch in the **OFF** position.
- **SETUP** mode: Power switch in the **SETUP** position (screen is on).
- **ON** mode: Power switch in the **ON** position, the camera is in working mode.

App & WiFi Connection:

You can use the APP (**TrailCam Go**) to connect the camera when the camera is operating in the **ON** mode.

7.1. **OFF Mode**

The **OFF** mode is the "safe" mode when any actions must be taken, e.g., replacing the memory card or batteries, or transporting the device. And of course, when you are storing or not using the camera, you will switch it to **OFF**. Please note that in the **OFF** mode the camera consumes little power. It's a good idea to take the batteries out of the battery compartment if the camera will not be used for a long time.

7.2. **SETUP Mode**

In **SETUP** mode, you can easily review and adjust your camera's settings using the built-in screen. To access these settings, simply press the **MENU** key twice to bring up the menu. Within this menu, you have the ability to modify various parameters such as photo or video resolution, the time interval between photos, enabling or disabling time imprinting, and more (for further details, refer to Section 9 **ADVANCED SETTINGS**).

When you shift the power switch to the **SETUP** position, the screen will activate, displaying essential information like the available image capacity, battery level, camera or video mode, and more.

Please take note: In **SETUP** mode, if there is no activity (key pressing) within 2 minutes, the camera will automatically turn off the screen to conserve power.

In **SETUP** mode, you can also connect the camera to a computer's USB port to download your images.

7.3.ON Mode

Anytime after the batteries and memory card have been inserted, you can switch on the camera. When the power switch is moved to the **ON** position, the camera will enter into the **ON** (Surveillance) mode. The camera will countdown 15-second delay and then be ready to capture images. Once in the **ON** mode, no manual controls are needed or possible (the control keys have no effect). The camera will take photos or videos automatically (according to its current parameter settings).

You can either move the power switch directly from **OFF** to **ON** mode, or stop at the **SETUP** position first to change one or more settings, then move the switch to **ON** after you have finished doing so.

Shortcut Keys/Functions

As mentioned earlier in the "Parts & Controls" section, the keypad keys serve secondary "shortcut" functions when the camera is in **SETUP** mode:

Press the **UP** key to quickly switch the camera to video mode.

Press the **Down** key to swiftly set the camera to capture still photos.

Press the **SHOT** key to manually trigger the shutter. This feature is handy for testing the camera.

When set to the **SETUP** position (the middle position), press the **REPLAY** key to review your photos and videos. Keep in mind that the camera should not be in the **OFF** or **ON** position for this function to work. Utilize the **DOWN** or **UP** key to navigate through your media, and finally, press the **REPLAY** key to exit playback mode.

8. WI-FI CONNECTION

8.1. Download **TrailCam Go** Mobile APP

Before using the Wi-Fi functionality, please download the "**TrailCam Go**" App.

EN



You can download the app from the app store by scanning the following QR code.



NOTES:

The screenshots provided in this section are for reference purposes only. The actual interface and layout may vary on different versions of the App, whether on iOS or Android.



While using the **TrailCam Go** App (referred to as the App), it's important to grant the App access to certain permissions on your device. These permissions include Wi-Fi, Bluetooth, storage, location, and camera access. Enabling these permissions is essential to facilitate the functionality of taking pictures and recording videos with the App.

For iOS users on iOS 14 and later, it's also necessary to enable the Local Network permission to ensure seamless App operation. This will help maintain connectivity and ensure the App functions as intended.

Note: KJK230 WiFi trail camera can't connect to home Wi-Fi router.

8.2.Enable Wi-Fi and Bluetooth

Enabling both Wi-Fi and Bluetooth on your mobile phone before launching the App is a mandatory step. This action is crucial for optimizing the connection speed between the App and the camera.



Figure 8: Enable Wi-Fi and Bluetooth

8.3. Add Your Camera

Make sure your camera is in ON Mode, and that it is near you.

To get a stable connection, please get close to your camera no farther than **45ft** away with no obstacles between you and the camera, such as walls, glass doors etc.

To add your camera, simply tap the "+" icon in the center of the screen (*Figure 9*).

8.4. Choose Device Type

Please tap Wi-Fi Camera



Figure 9: Tap to add your camera



Figure 10: Select Wi-Fi camera Type



Figure 11: Click Next

8.5. Search Your Camera and Link

By default, in the list the camera will be indicated as ID "KJK_XXXX". The App automatically searches for all Wi-Fi trail cameras nearby, please make sure your camera is within the Wi-Fi range. This process may take up to 15 seconds. If there is no device shown in the list, To return to the previous menu, click the "X" key. To refresh the list, click "Next" again (*Figure 11*) .

Tap the one you want to add (*Figure 12*). The App starts connecting to your camera. It might take up to 15 seconds to build the Bluetooth and Wi-Fi connection between the App and camera. There are 4 steps (Illustration omitted):

Step1 - Connecting through Bluetooth...

Step2 - Searching Wi-Fi ...

Step3 - Activating the camera...

Step4 - Connecting through Wi-Fi...



Figure 12: Connect camera

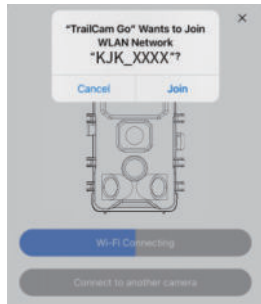


Figure 13: Allow Wi-Fi-Connection on iOS Device

A system pop-up message will show (*Figure 13*).

Please tap "**Join**" to allow Wi-Fi connection. The string "KJK_XXXX" is the name of Wi-Fi hotspot on the camera to allow Wi-Fi connection. Among cameras, the prefix TrailCam is fixed, XXXX is the internal camera identifier which may vary from different cameras.

NOTE: On Android devices, there might be different system pop-up messages that ask for allowing App connection to camera since different mobile phone manufacturers may modify and customize this system message.

****Troubleshooting Connectivity Issues****

If you encounter any problems with the connection, follow these steps to troubleshoot and resolve the issue:

1. ****Forget WiFi Network****:
 - Open Settings on your iPhone.
 - Navigate to WiFi and forget the currently connected Wi-Fi network.
 - Reattempt to connect your phone to the camera's Wi-Fi network.
2. ****Check App Permissions****:
 - Ensure that the app has necessary permissions to access Bluetooth and Wi-Fi on your iPhone.
 - Verify permissions in Settings > Privacy > Bluetooth & WiFi.
3. ****Quick Checks****:
 - Ensure you are within 45ft of the camera due to Bluetooth technology limitations.
 - Confirm that the camera is powered on.
 - Verify that the Wi-Fi option on the camera is enabled.
 - Check the camera's battery level and ensure it is sufficient.
 - Enable both Bluetooth and Wi-Fi on your phone.

If the issue persists after following these steps, please contact our customer service at support@kjkcam.com. We are committed to providing assistance and will offer either a 100% refund or a replacement unit to resolve the problem promptly.

After connected, a pop-up message would show as below:

8.6.App Navigation

Features	Details	Refer to
Camera	Preview, Manual taking pictures or videos.	Figure 14
Status	Camera status, including battery level, Memory Card capacity and used size, internal temperature of the camera, number of pictures and videos stored on the Memory Card, camera model, firmware version number, etc.	Figure 15
Setting	Display or program camera settings, such as mode, picture quality etc.	Figure 16
Gallery	Review or download the pictures or videos the camera has taken.	Figure 17

EN

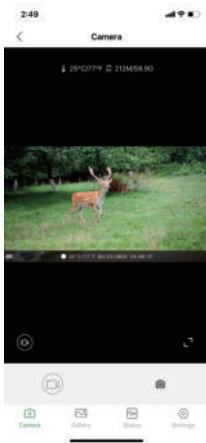


Figure 14: Camera



Figure 15: Status



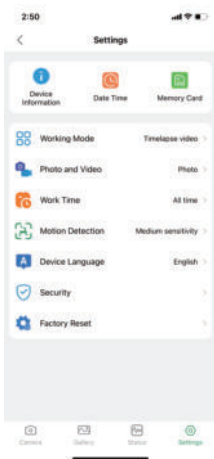


Figure 16: Settings



Figure 17: Gallery

9. ADVANCED SETTINGS

The trail camera comes with preset manufacturer settings. You can change the settings to meet your requirements. Please make sure that the camera is in the **SETUP** mode. Once the camera screen is on, press **MENU** key to enter/exit the menu. Press the **UP/DOWN** key to change the setting, always remember to press the **OK** to save the change. Otherwise you will lose your new setting.

Parameter	Settings (Bold=default)	Description
Mode	Motion Detection Timelapse normal Timelapse video	Select different mode to monitor
Photo or Video	Photo Video Photo+Video	Select whether still photo , video, photo&video clips are taken.
Photo resolution	Smart Best Photo 2MP 8MP ... 64MP 84MP	Select desired resolution for still photos from 2 to 84megapixels. Higher resolution produces better quality photos, but creates larger files that take more of the memory card capacity. Larger files require longer time to write to the memory card, which will slightly slow the shutter speed.
Photo Series	1P, 2P, 3P, 4P, 5P	Select the number of photos taken in sequence per trigger in Photo mode.
Video resolution	Smart Best Video 720P 1080P ... 6K 8K	Select video resolution (pixels per frame). Higher resolution produces better quality videos, but creates larger files that take more of the Memory card capacity.
Video Length	10seconds, Optional from 5s to 3min	Videos are in MP4 format that can be played back on most video players (VLC/IrfanView etc.) Note: Night videos are limited to a maximum of 30 seconds to conserve the batteries. If set video length higher than 30 seconds, e.g. 60 seconds, the max recording length at night keeps 30 seconds.

Audio Recording	On Off	Selecting On will record video with sound.
Shot Lag	10 seconds , optional from 5s to 60min	Select the shortest length of time that the camera will wait until it responds to any subsequent triggers from the PIR sensor after a game is first detected. During the selected interval, the camera will not take pictures/videos. This prevents the memory card from filling up with too many redundant images. Note: this option is invalid if Mode is set as "Time Lapse"
PIR Sensitivity	High Middle Low	The "High" level will make the camera more sensitive to infrared (heat) and more easily triggered by motion, the "Low" level makes it less sensitive to heat and motion. The "Middle" is for average or moderate conditions. Commonly, the "High" level is suitable when the ambient temperature is warm and little interference (interference such as windy), and the "Low" level is helpful in cold weather. Note: This option is invalid if Mode is set as "Time Lapse"
Work Time	On Off	Select On if you only want the camera to work within a specified time period every day. For instance, if the starting time is set at 18:35 and the ending time at 08:25, the camera will function from 18:35 the current day to 08:25 the next day. Outside the time period the camera will not be triggered or take photos/videos.
Timelapse	On Off optional from 3s to 24h	When the "Time Lapse" feature is enabled, the camera will automatically take photos/videos according to the set interval (1 Min ~ 24 Hours can be set) regardless of whether the motion sensor has detected any game. For example, after setting the interval

		<p>time to 1H, and the camera will take a photo or record a video every hour (confirm whether to take a photo or record video based on your work mode), the camera will take 24 photos within 24H.</p> <p>This is helpful when observing cold-blooded animals like snakes, or the process of flowering etc.</p> <p>Note: Too small interval set in the Time Lapse Settings will enable to take more pictures, but can consume more battery power then reduce battery life accordingly.</p> <p>Note: this mode will disable motion detection.</p>
Date/Time	M/D/Y hh:mm	<p>M-Month D-Day Y-Year hh-Hour mm-Minute</p> <p>Press the Menu key to access the menu options. Use the navigation keys to select the "Date & Time" option and press the OK key to enter the settings. Adjust the time and date according to the local time.</p> <p>To modify a specific value, use the UP/DOWN keys to navigate to the desired field and press the OK key to select it. Use the UP/DOWN keys to modify the value of the selected field. For example, for the hour or month, you can increase or decrease the value. After making the necessary modifications, press the OK key to confirm and save the changes. To set the time format, find the option for time format (12 or 24-hour format). Use the OK key to select the desired time format. If the 12-hour format is selected, the captured images and videos will display AM and PM water marks. For example, in the 24-hour format, the time and date would be displayed as "March 8,2023,15:46:29" while in the 12-hour format, it would be displayed as "March 8,2023,3:46:29 PM".</p>

Date Format	D/MY M/D/Y Y/M/D	Select date format which will be shown on the screen and each capture
Time Format	12h 24h	Select time format which will be shown on the screen and each capture. 12h-AM/PM.
Motion Test		This feature helps you aim the camera at your target area. Please refer to the details in Section 10.2.
Password Protection	On Off	Set a 4-digit password to secure your camera; if the code is lost, switch the power from OFF to SETUP, simultaneously press and hold the "OK" and "UP" keys(Don't let go of your fingers), then turn the power to "SET" to automatically clear the password upon camera startup.
Beep Sound	On Off	Choose to turn on or off.
Memory Card Format	Yes No	All files will be deleted after formatting the memory card. Highly recommend you format the memory card if it has been used previously in other devices. Caution: Make sure wanted files on the memory card have been backed up first!
Camera Name	On Off	Select On to assign a 4-character long in the form of Capital A-Z, 0-9 to record the location in the photos (e.g. A123 for Yellow Stone Park). This helps multi-camera users identify the location when reviewing the photos.
Factory Reset	Yes No	Selecting Yes will return all your previous settings back to the manufacturer default.
Version Info	Defined	Display the version of the camera

10. MOUNTING AND POSITIONING THE CAMERA

10.1.MOUNTING

After you've set up the camera's parameters to your personal preferences at home, you're ready to take it outside and slide the power switch to **ON**. When setting up the camera for scouting game or other outdoor applications, you must be sure to mount it in place correctly and securely. We recommend mounting the camera on a sturdy tree with a diameter of about 6 in. (15cm). To get the optimal picture quality, the tree should be about 16- 17 ft. (5 meters) away from the place to be monitored, with the camera placed at a height of 2.5-3.5 ft. (0.75- 1m). Also, keep in mind that you will get the best results at night when the subject is within the ideal flash range, no farther than 65 ft. (20m) and no closer than 10 ft.(3m) from the camera.

Note: Aiming a camera North will prevent capturing overexposed photos pointed directly at the sun.

Using the tripod socket : The camera is equipped with a socket at the bottom end to enable to mount on a tripod or other mounting accessories with a standard UNC 1/4-20 thread screw.



Figure 18: Strap

10.2.SENSING ANGLE AND DISTANCE TEST

To test whether the camera can effectively monitor the area you choose, this test is recommended checking the sensing angle and monitoring distance of the camera. To perform the test:

Switch the camera to the **SETUP** mode.

Select **Motion Test** in the Menu. Close the camera door.

Make movements in front of the camera at several positions

within the area where you expect the game or subjects to be. Try different distances and angles from the camera.

The screen shows the number of times triggered. The results of your testing will help you find the best placement when mounting and aiming the camera. The height away from the ground for placing the device should vary with the animal size appropriately. In general, 3 to 6 feet is preferred. You can avoid potential false triggers due to temperature and motion disturbances in front of the camera by not aiming it at a heat source or nearby tree branches or brush (especially on windy days).

Do **NOT** install the camera behind the glass window as that is not possible to sense any motion. Avoid the camera toward to glass the object.

10.3.SWITCHING ON THE CAMERA

If you set the camera working mode as **Time Lapse** in the menu, once you switch to the **ON** mode, the camera will be ready to go into **Time Lapse** mode, then take images periodically according to your preset **Time lapse Interval** parameter .

Before leaving the camera unattended, please check for the following:

Are the batteries inserted with correct polarity and is their power level sufficient?

Does the memory card have sufficient available space?

Is the power switch in the **ON** position?

11. REVIEW PHOTOS OR VIDEOS

After you have setup, mounted and activated your CAMERA, you will be eager to return later and review the images it has captured for you. The camera stores photos and videos in the folder \DCIM in the memory card. Photos are saved with file names like DSCF0001.JPG and videos like DSCF0001.MP4. The MP4 video files can be played back on most popular media players, such as Windows Media Player, VLC etc.

There are several different ways this can be done.

You can directly review the photos or videos on the camera screen.

Or in the SETUP mode only, you can use the provided USB cable to download the files to a computer.

Or you can put the memory card to a memory card "reader" (user supplied), plug in a computer, and browse the files on the computer without downloading.

12. TECHNICAL SPECIFICATIONS

Element	Description
Max. Pixel Size	84MP
Lens	FOV=90°
IR Flash	100ft
LCD Screen	2.0" Color Screen
Keypad	8 Keys, 1 Power Switch
Memory	SD, SDHC or SDXC memory card, max capacity 128GB
Picture Size	Smart Best Photo/2M/8M/16M/24M/ 32M/42M/48M/64M/84M
Video Size	Smart Best Video/720P/1080P/2.7K/ 4K/6K/8K
PIR Sensitive	Low/Middle/High
PIR Sensing Distance	100ft(-22°F to +158°F)
PIR Sensing Angle	Total 130°
Trigger Time Speed	Approx. 0.05~0.5 sec. (0.05sec. while side motion sensors enabled)
Shot Lag	5sec.-60min., Programmable
Photo Series	1~5
Video Length	5sec. ~ 3min., Programmable (Note: Max 30sec. at nighttime to conserve batteries lifetime)
Work Time	On /Off, Specific working period of time
Password Protection	4-Digit Code
Camera Name	4-Character (A-Z, 0-9)

Time Lapse	3 Sec. ~ 24 Hours
Power Supply	8x1.5V AA Batteries
Auto Stand-by	Auto Stand-by (Surveillance mode) in 2min. while no operation in SET mode
Interface	Type C-USB, Memory Card holder, External Power (DC 6V/ 1.5A, Plug 3.5x1.35mm)
Mounting	Strap, Tripod Base (1/4"-20)
Waterproof	IP67
Operation Temperature	-22 °F to +158°F
Operation Humidity	5% ~ 95%
Certificate	FCC & IC& CE & RoHS & WEEE& PSE
Product Dimensions	5.4 x 4 x 2.5 inches/138 x 100 x 65mm
After-sales	support@kjkcam.com

13.IMPORTANT NOTE

- Before inserting or removing the memory card, make sure the camera is turned **off**.
- When checking the camera in **SETUP** mode, the ambient light source may be unstable due to handheld movement. This can trigger the motion sensor, resulting in a clicking sound and a flashing screen. This is normal.
- It is recommended to use high-performance alkaline batteries to extend the camera's usage time.
- Avoid using 1.2V rechargeable batteries as the trail camera requires 1.5V for proper functioning. Low battery

voltage can lead to improper operation. After the battery is depleted, the camera will only have a few hours of operation remaining (the camera will display a low battery warning).

- When using the trail camera for the first time or if the camera cannot recognize the memory card, please format the memory card before use. Before installing the battery, confirm the correct battery polarity. Incorrect polarity may cause the camera to short-circuit and potentially damage it. Please note that the camera is not protected against short circuits.
- When using the product for the first time, remove the protective film from the lens and sensor to ensure the motion sensor is clean and undamaged. Any scratches or damage can affect the camera's triggering performance.
- For on-site installation, ensure that the camera's socket and the DC plug at the bottom are properly sealed to prevent damage from rain.
- The USB cable provided is for transferring files from the camera to the computer only. Do not use it to charge the camera or rechargeable batteries as this can severely damage the camera.
- Keep the camera lens and infrared window clean. If they become dirty, clean them with soft glass clothes. Do not use sharp objects that may scratch the LCD, camera lens, infrared sensor, or LED glass.
- When the battery level is low, promptly replace all batteries to avoid damage to the camera due to electrolyte leakage.



14. WARRANTY

TWO-YEAR LIMITED WARRANTY

EN

Your KJK trail camera is backed by a two-year warranty starting from the date of original purchase. We assure you that your camera is designed to be free from defects in materials and workmanship when used under standard conditions. It's important to note that this warranty excludes damages resulting from misuse, abuse, improper handling or installation, damage caused by wildlife, or any unauthorized repair attempts.

During the warranty period, we reserve the right to either repair or replace your camera with an identical or similar model at no cost. Please be aware that this warranty is applicable exclusively to the original retail purchaser through our authorized dealer network. To avail of warranty benefits, you'll need to provide proof of the original purchase date, such as a purchase receipt or order number. Any replacement product issued under this warranty will be covered for the remaining duration of the original product's warranty period.

This warranty specifically addresses failures attributed to material or workmanship defects during normal usage and does not extend to regular wear and tear.

If you require assistance with a warranty claim, kindly get in touch with your dealer or our authorized distributor.

15. FCC COMPLIANCE STATEMENT

This device complies with Part 15 of the FCC Rules.

Operation is subject to the following conditions:

- (1) This device may not cause harmful interference
- (2) This device must accept any interference received, including interference that may cause undesired operation.

Please Note: This equipment has been tested and found to comply with the limits for a Class B digital device, pursuant to part 15 of the FCC Rules. These limits are designed to provide reasonable protection against harmful interference in a residential installation. This equipment generates uses and can radiate radio frequency energy and, if not installed and used in accordance with the instructions, may cause harmful interference to radio communications. However, there is no guarantee that interference will not occur in a particular installation. If this equipment does cause harmful interference to radio or television reception, which can be determined by turning the equipment off and on, the user is encouraged to try to correct the interference by one or more of the following measures:

- Reorient or relocate the receiving antenna.
- Increase the separation between the equipment and the receiver.
- Connect the equipment into an outlet on a circuit different from that to which the receiver is connected.



Caution: To comply with the limits for an FCC Class B computing device, always use the signal cord and power cord supplied with this unit.

EN

The Federal communications Commission warns that changes or modifications to the unit not expressly approved by the party responsible for compliance could void the user's authority to operate the equipment.

Find us



support@kjkcam.com



@KJKcam



@KJKcam



@KJKcam

For any questions about the product, you can always contact us through the official website www.kjkcam.com. We will respond within 24 hours.